

Installation Guide

DURACOMP DECK140 - DIRECT FIX

DURACOMP DECK140

Care must be taken to ensure that joists are level, straight and square as DuraComp decking will conform to the level and orientation of the joists. Allow a 3-4mm fall per metre of deck, in the direction away from the structure, to assist in drainage and water runoff.

Pre-drilling of oversized holes and countersinking is required in order to allow for thermal movement of the product and reduce the risk of cracking. Either timber or composite screws can be used with a minimum length of 60mm appropriate for the steel or timber joists.. To select the correct drill bit, ensure that there is a 1mm gap between the edge of your screw and the hole. When fixing a butt joint, two screws are required to be positioned 20mm from the outside edge of each board and a minimum of 20mm from the end of each board. Drivers should be adjusted to a low or medium torque setting when fixing screws in to DuraComp composite decking.

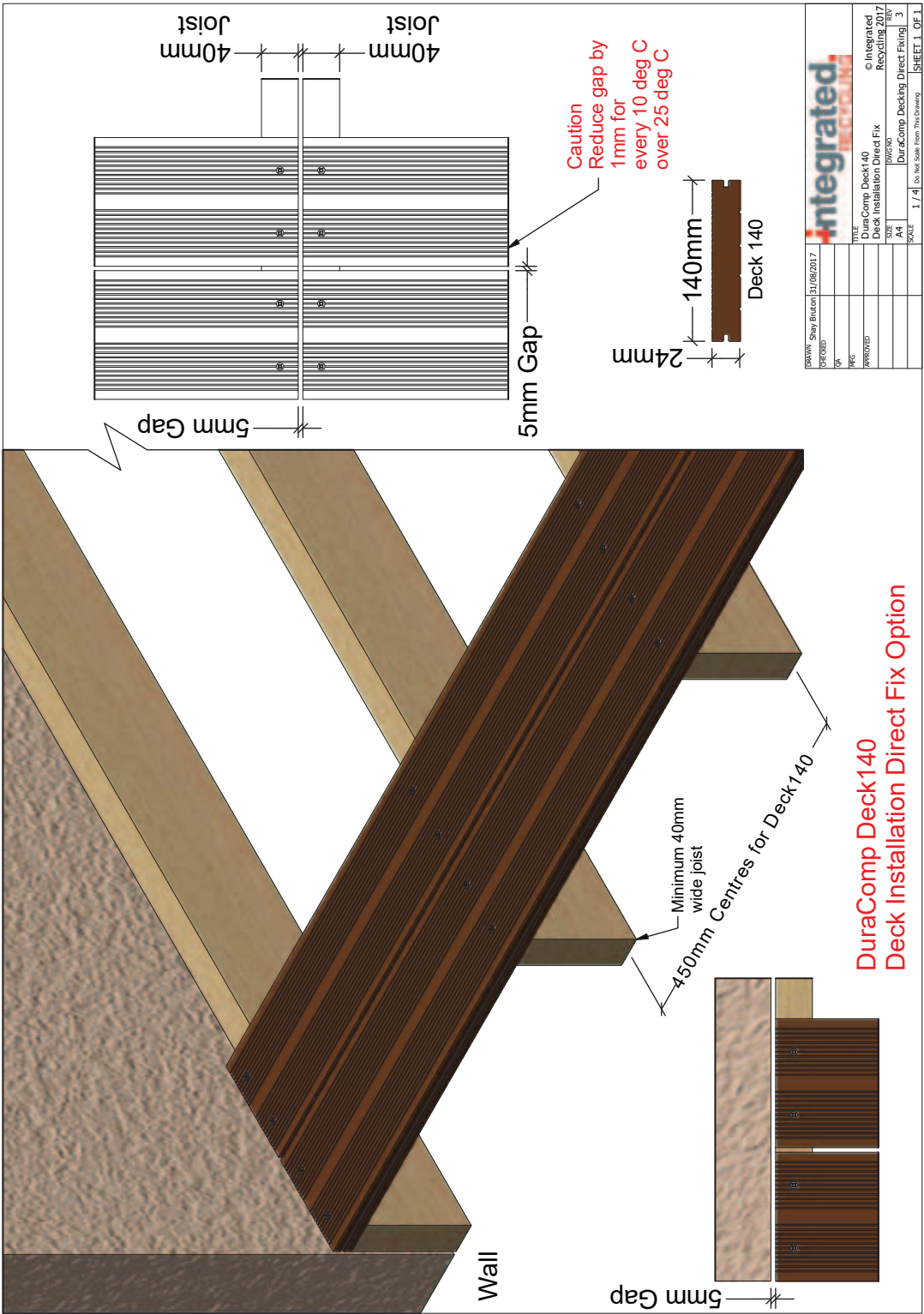
SUMMARY OF KEY SPECIFICATIONS

Duracomp Deck140	
Dimensions (nominal)	140 x 24mm
Maximum board length	5400mm
Minimum ground clearance	100mm
Minimum clearance over concrete	45mm
Maximum distance of joist centres	450mm
Gap – side by side	5mm
Minimum end gap to solid structure such as wall or post	5mm
Minimum joist size	40mm
Minimum distance of 2 screws with pre-drilled holes from end and side of board	20mm
Butt joins gap (where the ends of 2 longitudinal boards meet on a common double width)	5mm for up to 25 deg C at
Butt join fixings per board	2 screws
Minimum butt join joist size (single or double total width)	80mm
Maximum cantilever	40mm
Cut outs around protrusions to be supported	Yes
Suitability for fixing to steel, timber or WPC substructures	Yes
Suitable for residential applications	Yes
Suitable for commercial applications	Yes
Direct fixed with screws (not nails)	Yes
Can be drilled	Yes

Important Disclaimer

The technical recommendations contained in this publication are necessarily of a general nature and should not be relied on for specific applications without first securing competent advice. Whilst Integrated Recycling has taken all reasonable steps to ensure the information contained herein is accurate and current, Integrated Recycling does not warrant the accuracy or completeness of the information and does not accept liability for errors or omissions. Council and engineer advice, or similar, needs to be obtained directly by clients, and is not the responsibility of Integrated Recycling.





Important Disclaimer

The technical recommendations contained in this publication are necessarily of a general nature and should not be relied on for specific applications without first securing competent advice. Whilst Integrated Recycling has taken all reasonable steps to ensure the information contained herein is accurate and current, Integrated Recycling does not warrant the accuracy or completeness of the information and does not accept liability for errors or omissions. Council and engineer advice, or similar, needs to be obtained directly by clients, and is not the responsibility of Integrated Recycling.

©Integrated Recycling Pty Ltd 2017

