

### DURACOMP DECK100 AND DECK140

Care must be taken to ensure that joists are level, straight and square as DuraComp decking will conform to the level and orientation of the joists. Allow a 3-4mm fall per metre of deck, in the direction away from the structure, to assist in drainage and water runoff.

### SUMMARY OF KEY SPECIFICATIONS

1is accurate and current, Integrated Recycling does not warrant the accuracy or completeness of the information and does not accept liability for errors or omissions. Council and engineer advice, or similar, needs to be obtained directly by clients, and is not the responsibility of Integrated Recycling.

©Integrated Recycling Pty Ltd 2017

	Duracomp Deck100	Duracomp Deck140
Dimensions (nominal)	100 x 24mm	140 x 24mm
Maximum board length	5400mm	5400mm
Minimum ground clearance	100mm	100mm
Minimum clearance over concrete	45mm	45mm
Maximum distance of joist centres	400mm	450mm
Maximum gap – side by side	5mm	5mm
Minimum end gap to solid structure such as wall or post	5mm	5mm
Maximum cantilever	25mm	40mm
Cut outs around protrusions to be supported	Yes	Yes
Suitability for fixing to steel, timber or WPC substructures	Yes	Yes
Suitable for residential applications	Yes	Yes
Suitable for commercial applications	No	Yes
Wing clip fixings	Yes	Yes
Direct fixed with screws (not nails)	No	Yes
Can be drilled	No	Yes
Minimum joist size	40mm	40mm
Butt joins gap (where the ends of 2 longitudinal boards meet on a common double width joist) - 1mm less for every 10 deg C	5mm for up to 250 deg C at installation	5mm for up to 250 deg C at installation
Butt join fixings per board	4 clips and screws (2 on both boards)	4 clips and screws (2 on both boards)
Minimum butt join joist size (single or double total width)	80mm	80mm
Estimated number of clips per square metre	30	25

#### Important Disclaimer

The technical recommendations contained in this publication are necessarily of a general nature and should not be relied on for specific applications without first securing competent advice. Whilst Integrated Recycling has taken all reasonable steps to ensure the information contained herein is accurate and current, Integrated Recycling does not warrant the accuracy or completeness of the information and does not accept liability for errors or omissions. Council and engineer advice, or similar, needs to be obtained directly by clients, and is not the responsibility of Integrated Recycling.

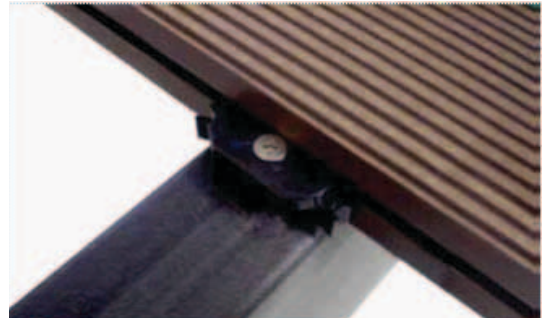


# Installation Guide

## DURACOMP DECKING - USING WING CLIPS

### WING CLIP INSTALLATION

Wing clips are supplied with stainless steel screws designed to be used with the DuraComp Deck100 or Deck140 fixing to either composite recycled plastic, timber or steel joists.



#### STEP #1: INSTALL STARTER CLIPS AND FIRST BOARD

1. Install starter clips on the edge of the first joist
2. Secure starter clips with appropriate screws
3. Push one edge of the DuraComp decking board into the starter clips, noting the first board must be straight and well secured

#### STEP #2: INSTALL WING CLIPS & SCREWS

4. Insert wing clip into hidden fixing channel of the DuraComp decking board
5. Align screw hole in wing clip with centre of joists
6. Only screw wing clips half way down – do not fully tighten

#### STEP #3: INSTALL SECOND DURACOMP DECKING BOARD

7. Slide the second deck board into place, making sure the wing clips fit into the groove
8. Ensure the board gap is 5mm and tighten the screw from Step #2
9. Install the next connecting clip on the other side of the second board in the same manner as step #2
10. Only screw deck clip half way down – do not fully tighten
11. Work outwards repeating this process along the length of the board at every joist ensuring that the boards are pushed in tightly

#### STEP #4: COMPLETE INSTALLATION

12. Tighten screws on wing clips in the first row
13. Repeat this process tightening each row after the board that follows is in place.

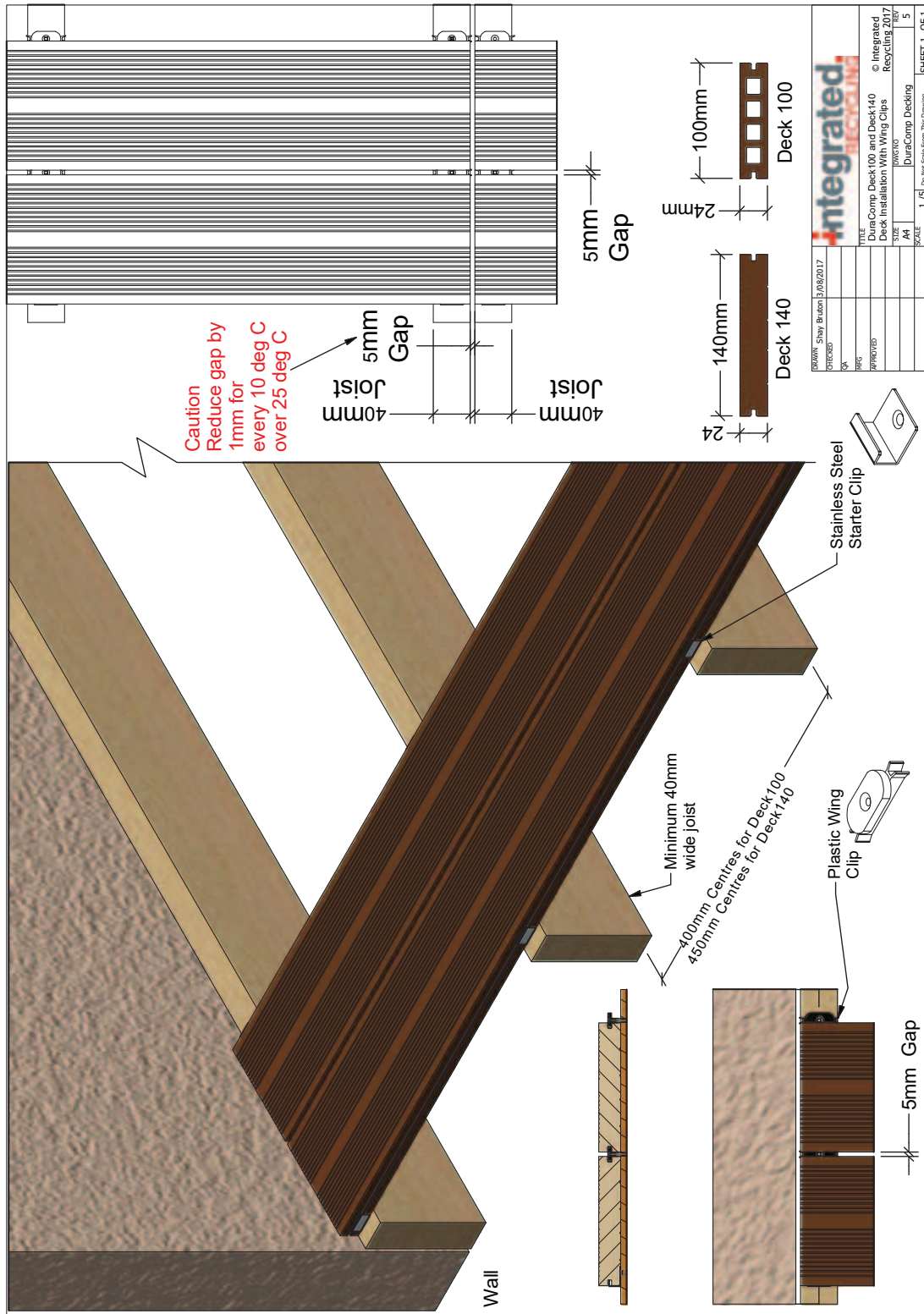
#### Important Disclaimer

The technical recommendations contained in this publication are necessarily of a general nature and should not be relied on for specific applications without first securing competent advice. Whilst Integrated Recycling has taken all reasonable steps to ensure the information contained herein is accurate and current, Integrated Recycling does not warrant the accuracy or completeness of the information and does not accept liability for errors or omissions. Council and engineer advice, or similar, needs to be obtained directly by clients, and is not the responsibility of Integrated Recycling.



# Installation Guide

DURACOMP DECKING - USING WING CLIPS



**Important Disclaimer**

The technical recommendations contained in this publication are necessarily of a general nature and should not be relied on for specific applications without first securing competent advice. Whilst Integrated Recycling has taken all reasonable steps to ensure the information contained herein is accurate and current, Integrated Recycling does not warrant the accuracy or completeness of the information and does not accept liability for errors or omissions. Council and engineer advice, or similar, needs to be obtained directly by clients, and is not the responsibility of Integrated Recycling.

