

# Technical Specifications

## RIVERLAND WALL MOUNTED BENCH

### FEATURES

The Riverland Wall Mounted Bench is designed for and loved by schools, sporting clubs and other recreational facilities. It is very easy to install, can be made in any length and fitted with either Envire or DuraComp bench slats.

The Riverland Wall Mounted Bench is used throughout Australia, because it is

- Durable and long lasting
- Tolerant of extreme climates, particularly wet or saline conditions
- Resistant to rot, termites and other pests
- UV resistant, does not fade or crack
- Flat packed to reduce freight costs
- Easy to assemble with clear instructions
- Great value for money

### RECYCLABLE

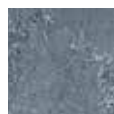
Integrated Recycling's (IR) Envire Range of patented composite recycled plastic products is manufactured in Australia from recovered agricultural plastic films and other recycled plastics combined with organic fibre. Integrated Recycling gives plastics a second life so that waste no longer means landfill. By purchasing the Envire range you are truly recycling.

### ORDER CODE

SEAT 241 W

### COLOUR OPTIONS

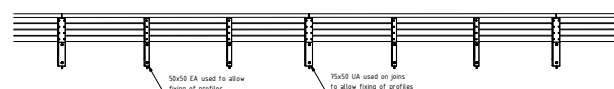
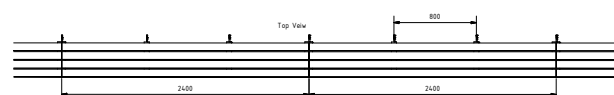
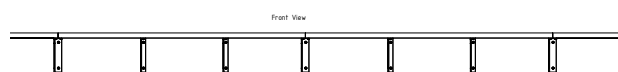
Charcoal



Rich Earth Brown



Green



### WE ARE HERE TO HELP

If there is anything more you need to know about any item in IR's range of composite recycled plastic products, please contact our knowledgeable staff on **1300 729 253** or [info@integratedrecycling.com.au](mailto:info@integratedrecycling.com.au)

