

**DURATRACK®**

RAILWAY SLEEPERS



# TOUGH. DURABLE. FIT FOR PURPOSE.

Mainline in-track trials current at Queensland Rail, MTM and V/Line

50

50 Year  
Design Life



Tested & Validated  
Institute of Railway  
Technology, Monash  
University



Uses Existing  
Equipment &  
Training



Manufactured  
using Australian  
waste plastic

IIP

Patented  
Technology



Australian  
Made

## DURATRACK® COMPOSITE RECYCLED PLASTIC RAILWAY SLEEPERS

The Duratrack® sleeper is a sustainable innovation that out performs traditional timber sleepers, uses waste plastic that would otherwise go to landfill and saves our natural timber resources from being felled.

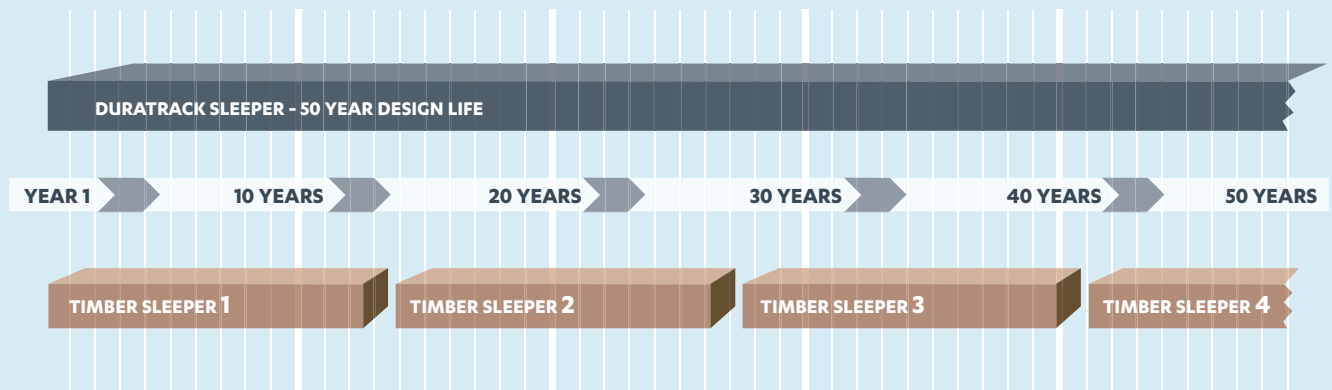
The Duratrack® sleeper project is a great example of how government, industry, universities and rail authorities can work together to create a circular economy.

**integrated.**  
RECYCLING

Duratrack® is a registered trade mark of Integrated Recycling Pty Ltd

## 50 YEAR DESIGN LIFE

Duratrack® railway sleepers have 3-4 times the design life of timber sleepers



ACCORDING TO A 2014 REPORT FROM THE UNIVERSITY OF SOUTHERN QUEENSLAND, THE MAJOR FAILURE MODES OF TIMBER SLEEPERS ARE FUNGAL DECAY, END SPLITTING AND TERMITES.

### MATERIAL PROPERTIES OF THE DURATRACK® SLEEPER

- ✓ Termite resistant
- ✓ Fire tolerant
- ✓ Rot resistant
- ✓ Low water absorption
- ✓ UV resistant
- ✓ Resistant to fungal decay
- ✓ Splinter free
- ✓ Maintenance reduction
- ✓ Fully recyclable after 50 years use
- ✓ Easy to drill & fasten - same as timber
- ✓ Tooling & transporting - same as timber
- ✓ Less energy to produce than concrete or steel sleepers

## MAINLINE IN-TRACK TRIALS

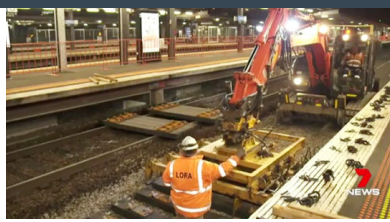


**QueenslandRail**

### 2018: TOOWOOMBA REGION

Mainline trial 1: Helidon to Gatton  
Mainline trial 2: Chinchilla to Miles

Duratrack® sleepers have been installed on freight lines in the Lockyer Valley and Darling Downs.



### 2019: RICHMOND STATION

Platform 2, Sandringham mainline

Duratrack® sleepers have been installed on one of the busiest stations of the MTM network.



**V/Line**

### 2019: WYNDHAM VALE

New mainline stabling facility

Duratrack® sleepers have been installed during the construction of the new mainline stabling yard entry track.

For more information please contact:

**Integrated Recycling Pty Ltd** T: 1300 729 253 E: [info@integratedrecycling.com.au](mailto:info@integratedrecycling.com.au) W: [www.integratedrecycling.com.au](http://www.integratedrecycling.com.au)