

Tasman Bench

PRODUCT SPECIFICATIONS

Envire[®]
PARKSCAPE

FEATURES

The Tasman Bench is ideally suited for harsh coastal environments. Made from Australian recycled plastics it will withstand the salty sea air destructive of so much outdoor furniture. Galvanised fixings are standard or stainless steel fixings as an option.

The Tasman Bench is part of the Envire range of park furniture that is used throughout Australia, because it is:

- Tough, durable and long lasting
- Tolerant of extreme heat, moisture and saline conditions
- Resistant to termites, rot, water and sun damage
- UV resistant, does not fade, crack or split
- Delivered as flat pack - economic freight costs
- Easy to assemble - comes with clear instructions
- Great value for money

RECYCLABLE

Integrated Recycling transforms Australian waste plastics into Polytenislate[®] our patented formulation from which we make our range of recycled plastic products.

Integrated Recycling views waste plastic as a resource to upcycle so waste no longer means landfill. At the end of our furniture's life the recycled plastic can be recycled and repurposed over and over. By purchasing the Envire range you are participating in Australia's circular economy.

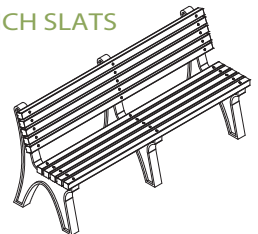
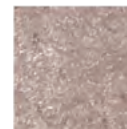


COLOUR OPTIONS - ENVIRE BENCH SLATS

CHARCOAL



EARTH BROWN



WE ARE HERE TO HELP

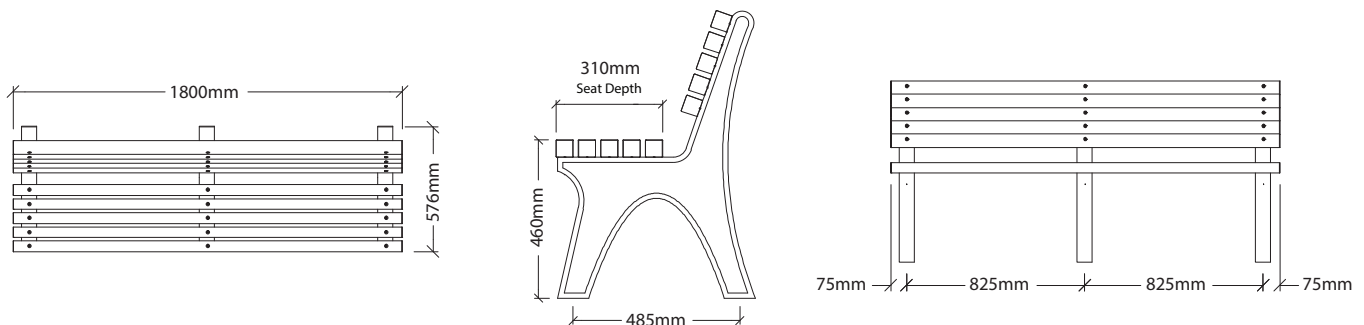
If you need to know about IR's range of recycled plastic products, please call our knowledgeable staff on **1300 729 253** or email info@integratedrecycling.com.au

Scan the QR code to visit our furniture range online.


www.integratedrecycling.com.au/outdoor-furniture



ORDER CODE: PFTAS-EN18



 www.integratedrecycling.com.au

 1300 729 253